

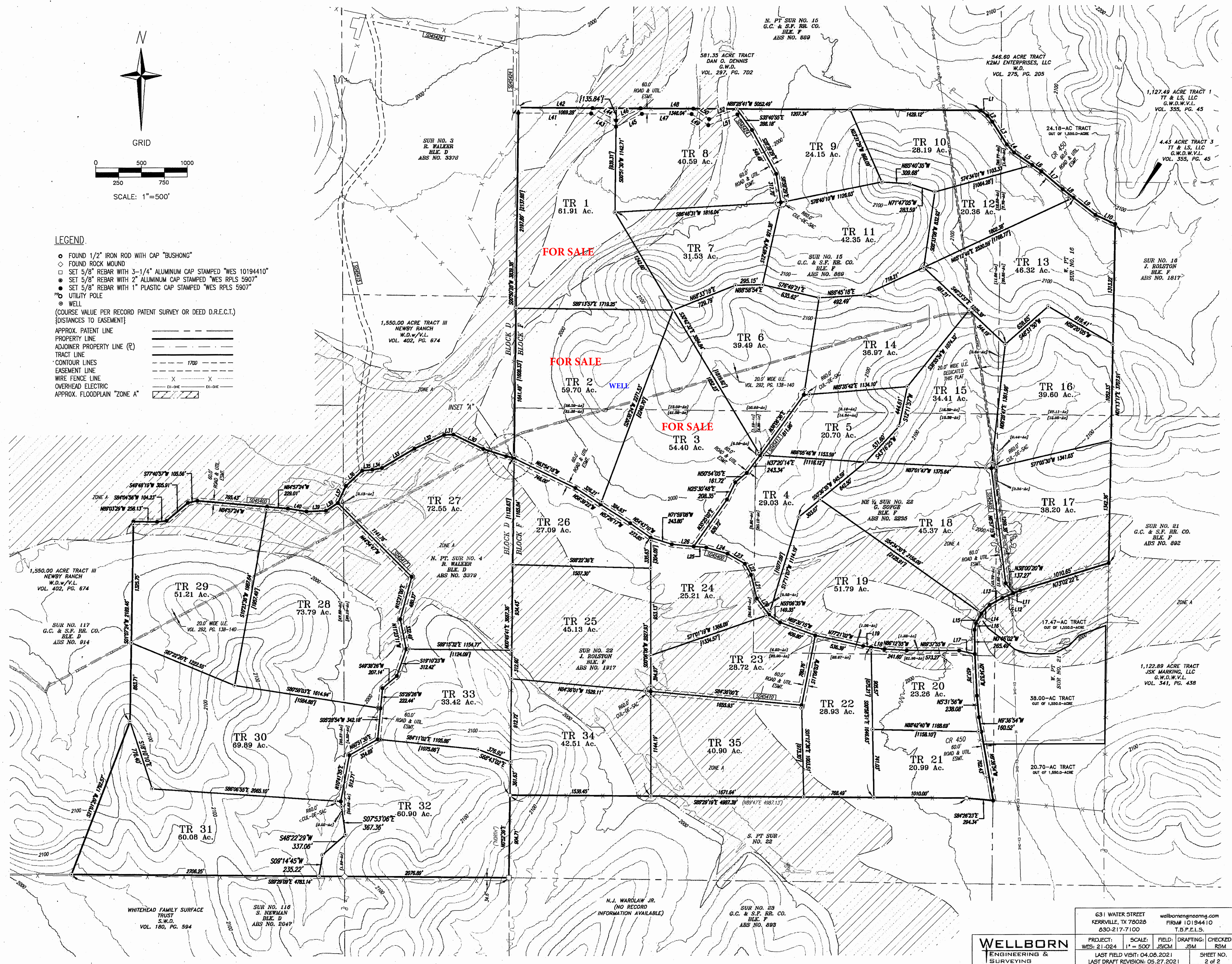
INSET "A"
SCALE: 1"=100'

LEGEND

- FOUND 1/2" IRON ROD WITH CAP "BUSHONG"
- ◇ FOUND ROCK MOUND
- SET 5/8" REBAR WITH 3-1/4" ALUMINUM CAP STAMPED "WES 10194410"
- SET 5/8" REBAR WITH 2" ALUMINUM CAP STAMPED "WES RPLS 5907"
- SET 5/8" REBAR WITH 1" PLASTIC CAP STAMPED "WES RPLS 5907"
- UTILITY POLE
- ⊙ WELL
- (COURSE VALUE PER RECORD PATENT SURVEY OR DEED D.R.E.C.T.) (DISTANCES TO EASEMENT)
- APPROX. PATENT LINE
- PROPERTY LINE
- ADJOINER PROPERTY LINE (P)
- TRACT LINE
- 1700
- CONTOUR LINES
- EASEMENT LINE
- WIRE FENCE LINE
- OVERHEAD ELECTRIC
- APPROX. FLOODPLAIN "ZONE A"

Line #	Length	Direction
L1	89.83	N50°38'35"W
L2	87.75	N39°18'04"W
L3	295.14	N32°05'40"W
L4	119.85	N41°41'42"W
L5	240.23	N55°15'19"W
L6	121.51	N55°15'19"W
L7	307.41	N49°18'06"W
L8	148.00	N51°37'13"W
L9	305.79	N51°37'13"W
L10	237.07	N65°08'41"W
L11	79.84	N67°13'51"E
L12	131.37	N67°13'51"E
L13	160.66	N61°26'00"E
L14	127.09	N44°41'54"E
L15	123.53	N28°36'20"E
L16	73.26	N12°20'24"E
L17	175.29	N77°18'07"W
L19	86.77	N81°46'07"W
L20	219.66	N36°47'20"W
L21	264.16	N13°41'44"W
L22	139.48	N28°39'34"W
L23	217.52	N59°39'06"W
L24	243.09	N73°37'18"W
L25	137.38	S84°35'11"E
L26	240.09	N84°34'00"W
L27	14.73	N64°06'11"W

Line #	Length	Direction
L28	74.29	N79°10'33"W
L29	263.90	N71°54'30"W
L30	361.59	N64°12'45"W
L31	102.41	S87°41'43"W
L32	356.99	S65°29'54"W
L33	415.56	S59°17'32"W
L34	104.56	S80°03'57"W
L35	112.12	S84°58'14"W
L36	245.95	S46°52'19"W
L37	206.47	S25°19'57"W
L38	155.18	S57°02'36"W
L39	211.96	S87°58'52"W
L40	205.79	N81°04'35"W
L41	795.14	S89°28'41"E
L42	809.93	N89°28'41"W
L43	308.46	N61°46'28"W
L44	292.19	N61°46'28"W
L45	315.54	S63°29'29"W
L46	298.90	S63°29'29"W
L47	544.49	S89°28'41"E
L48	576.91	S89°28'41"E
L49	219.48	N56°06'03"W
L50	206.84	N56°06'03"W
L51	337.93	S69°48'46"W
L52	321.80	S69°48'46"W



631 WATER STREET
KERRVILLE, TX 78028
830-217-7100

wellbornengineering.com
FIRM# 10194410
T.B.P.E.L.S.

WELLBORN
ENGINEERING &
SURVEYING

PROJECT: WES-21-024
SCALE: 1" = 500'
FIELD: JSM
DRAFTING: JSM
CHECKED: RSM
LAST VISIT: 04.08.2021
LAST DRAFT REVISION: 05.27.2021

SHEET NO. 2 of 2